



RECORD OF TITLE
UNDER LAND TRANSFER ACT 2017
FREEHOLD
Search Copy



R.W. Muir
Registrar-General
of Land

Identifier **NL115/45**
Land Registration District **Nelson**
Date Issued 18 February 1952

Prior References

NL110/16 NL113/43

Estate Fee Simple
Area 868 square metres more or less
Legal Description Lot 18 Deposited Plan 4498
Registered Owners
Darrell Bruce Stubberfield

Interests

46467 Transfer creating the following easements

Type	Servient Tenement	Easement Area	Dominant Tenement	Statutory Restriction
Right of way	Lot 18 Deposited Plan 4498 - herein	Part herein	Lot 14 Deposited Plan 4498 - CT NL113/44	

46694 Transfer creating the following easements

Type	Servient Tenement	Easement Area	Dominant Tenement	Statutory Restriction
Right of way	Lot 19 Deposited Plan 4498 - CT NL114/28	Part	Lot 18 Deposited Plan 4498 - herein	
Water pipe line rights	Lot 19 Deposited Plan 4498 - CT NL114/28	Part	Lot 18 Deposited Plan 4498 - herein	
Right of way	Lot 18 Deposited Plan 4498 - herein	Part herein	Lot 19 Deposited Plan 4498 - CT NL114/28	
Drainage rights and rights incidental	Lot 18 Deposited Plan 4498 - herein	Part herein	Lot 19 Deposited Plan 4498 - CT NL114/28	

46709 Transfer creating the following easements

Type	Servient Tenement	Easement Area	Dominant Tenement	Statutory Restriction
Drainage right and rights incidental	Lot 21 Deposited Plan 4498 - CT NL114/29	Part	Lot 18 Deposited Plan 4498 - herein	
Right of way	Lot 18 Deposited Plan 4498 - herein	Part herein	Lot 21 Deposited Plan 4498 - CT NL114/29	
Right to lay and maintain a water pipe and rights incidental thereto	Lot 18 Deposited Plan 4498 - herein	Part herein	Lot 21 Deposited Plan 4498 - CT NL114/29	
Right of way	Lot 21 Deposited Plan 4498 - CT NL114/29	Part	Lot 18 Deposited Plan 4498 - herein	

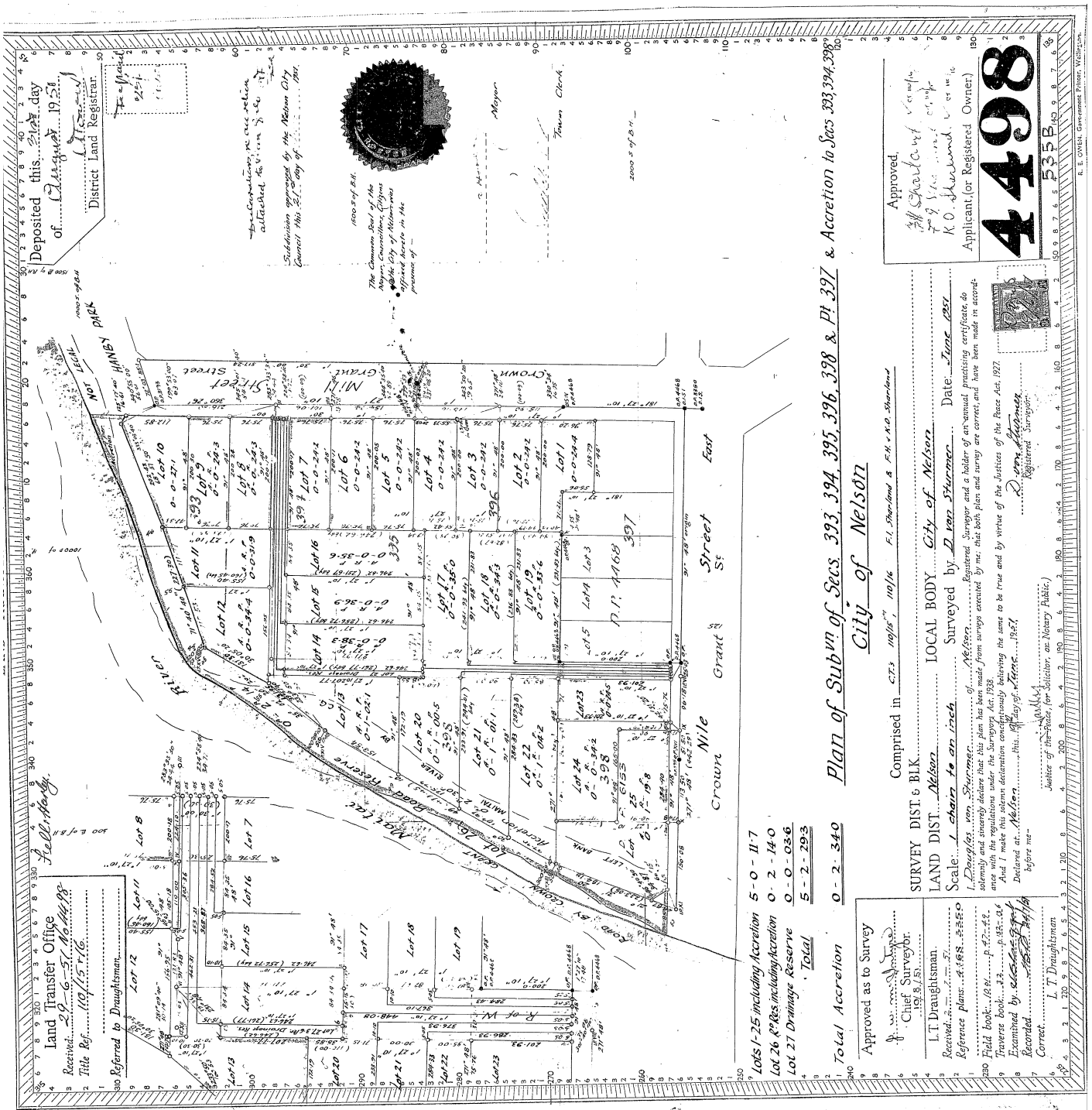
46832 Transfer creating the following easements - 18.2.1952

Type	Servient Tenement	Easement Area	Dominant Tenement	Statutory Restriction
Right of way	Lot 18 Deposited Plan 4498 - herein	Yellow DP 4498	Lot 17 Deposited Plan 4498	
Right of way	Lot 18 Deposited Plan 4498 - herein	Yellow DP 4498	Lot 22 Deposited Plan 4498	
Right of way	Lot 18 Deposited Plan 4498 - herein	Yellow DP 4498	Lot 20 Deposited Plan 4498 - CT NL115/47	
Right to connect with a water pipe and rights incidental thereto	Lot 18 Deposited Plan 4498 - herein	Part herein	Lot 17 Deposited Plan 4498	
Right to connect with a water pipe and rights incidental thereto	Lot 18 Deposited Plan 4498 - herein	Part herein	Lot 20 Deposited Plan 4498 - CT NL115/47	
Drainage rights and rights incidental	Lot 17 Deposited Plan 4498	Part	Lot 18 Deposited Plan 4498 - herein	
Drainage rights and rights incidental	Lot 22 Deposited Plan 4498	Part	Lot 18 Deposited Plan 4498 - herein	
Drainage rights and rights incidental	Lot 20 Deposited Plan 4498 - CT NL115/47	Part	Lot 18 Deposited Plan 4498 - herein	
Right of way	Lot 22 Deposited Plan 4498	Orange DP 4498	Lot 18 Deposited Plan 4498 - herein	
Right of way	Lot 17 Deposited Plan 4498	Blue DP 4498	Lot 18 Deposited Plan 4498 - herein	
Right of way	Lot 20 Deposited Plan 4498 - CT NL115/47	Pink DP 4498	Lot 18 Deposited Plan 4498 - herein	

61857 Transfer creating the following easements - 20.5.1957 at 2.45 pm

Type	Servient Tenement	Easement Area	Dominant Tenement	Statutory Restriction
Water and pipeline rights and rights incidental thereto	Lot 18 Deposited Plan 4498 - herein	Part herein	Lot 22 Deposited Plan 4498	

10832609.2 Mortgage to Westpac New Zealand Limited - 14.7.2017 at 9:36 am



Plan of Subdiv of Secs. 393, 394, 395, 396, 398 & Pt. 397 & Accretion to Secs 393, 394, 398

City of Nelson

Comprised in CTs 10/10, 10/16 F.I. Standard & F.A.N.O. Standard

SURVEY DIST. 6 BLK.

LAND DIST. Nelson City of Nelson

Scale: 1 chain to an inch Surveyed by D. van Sturmer Date: June 1951

I, Douglas van Sturmer, Registered Surveyor and a holder of an annual practicing certificate do solemnly and sincerely declare that this plan has been made from surveys executed by me, that both plans and survey are correct, and have been made in accordance with the regulations under the Surveyors Act 1924.

And I make this solemn declaration conscientiously believing the same to be true and by virtue of the Statute in that behalf made.

Declared at Nelson this 10th day of June 1951

Before me: L. T. Draughtman

Notary Public

Total Accretion 0-2-340

Approved as to Survey

Chief Surveyor

L. T. Draughtman

Received Plans: 4.4.58, 4.4.59

Field Book: 18.1, p. 47-48

Traverse Book: 13, p. 13-14

Examined by: L. T. Draughtman

Recorded: 1/1/51

Correct: L. T. Draughtman

Approved

J. H. Charlton

K. O. Howard

Applicant (or Registered Owner)

4498

535B

10 9 8 7 6 5 4 3 2 1

R. E. OWEN, Government Printer, Wellington.