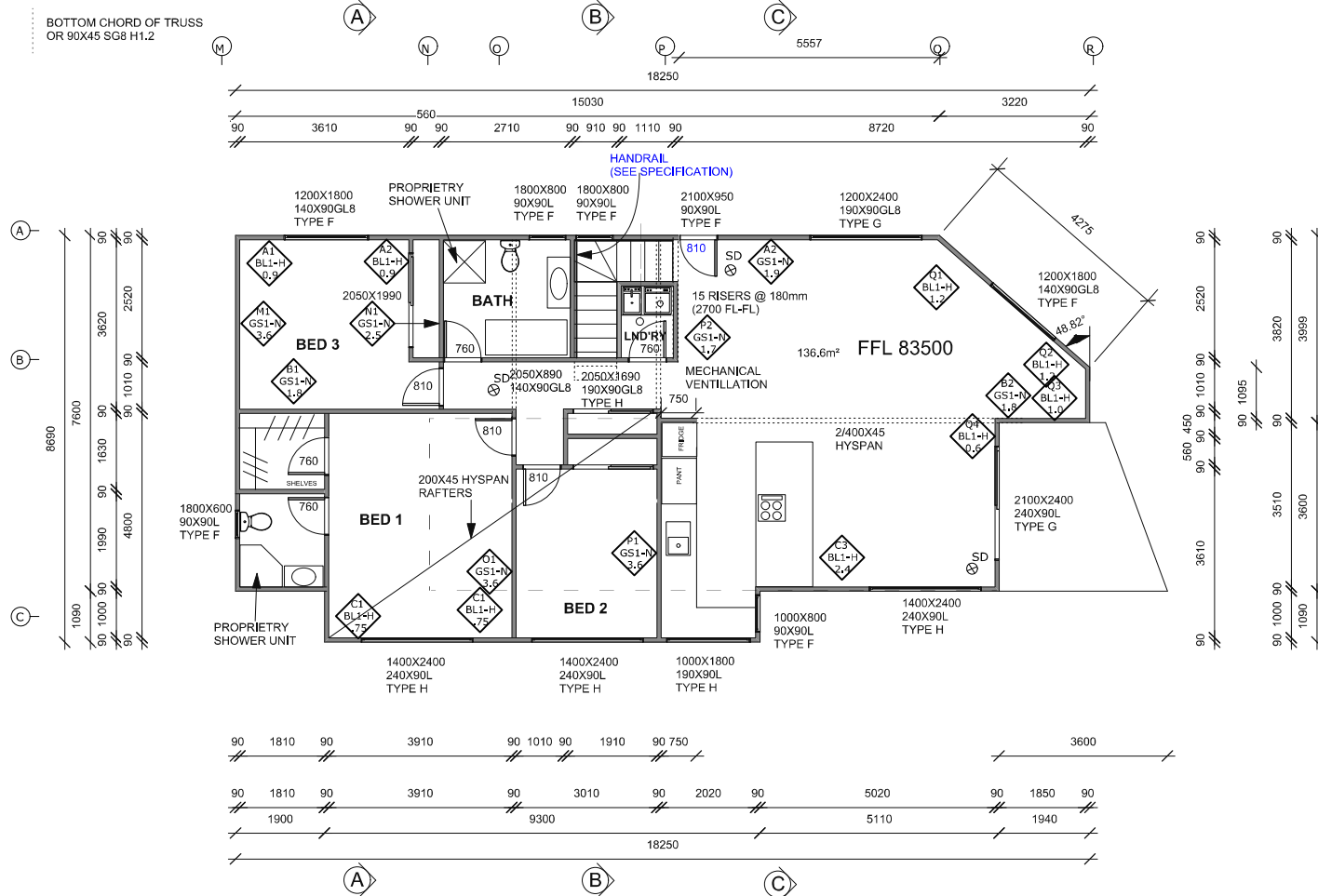
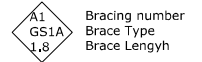


NOTE BRACES O1-P1 & P2 TOP PLATES ARE REQUIRED TO BE CONNECTED VIA A TRUSS TO THE OUTSIDE WALLS

BOTTOM CHORD OF TRUSS OR 90X45 SG8 H1.2



Bracing Notes



Hot Water Cylinder

Electric HWC complete with Tempering Valve, hwc with reducing valve & a safe tray complying with G12/AS1 5,2,3 with a 40mm dia to drain to safe place outside the building envelope, with a vermin flap fitted.

Wet Areas Wall Lining

Wet areas wall lining to be finished with Semi Gloss or Gloss paint as per acceptable solutions E3/AS1 3,1,2 Walls (f)

Legend

Type C = Lintel fixing type
140X90L = Lintel size
2100X2400 = Opening size (HxW)

WET AREAS FLOOR

FLOORS SHALL BE COATED WITH 3 COATS OF POLYURETHANE E3/AS1 3,1,1 (F)

H1 COMPLIANCE

WALL INSULATION R2.6
FLOOR EXPOL R 1.8
CEILING R 3.6
WINDOWS DOUBLE GLAZED ,26

SD ⊗ HUSH SENSITIVE SMOKE DETECTORS TYPE 1

CONFIRM ALL DIMENSIONS ON SITE ANY DISCREPANCIES CONTACT DESIGNER IMMEDIATELY

AMENDED 04.06.2019 ENTRY DOOR POSITION MOVED-TYPE 1 SMOKE DETECTOR NOTE-STAIR HANDRAIL SHOWN

THREE BEDROOM DWELLING	FLOOR PLAN UPPER	FOR T RYAN 8 CALAMARAS STREET NELSON	DRAWN G BENJAMIN 0122449153 DATE 05/07/2018	SCALE 1:100 @A3 REVISION 1	5/10
------------------------	------------------	--	---	----------------------------------	------